

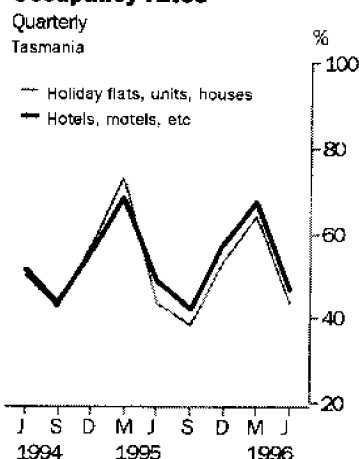
TOURIST ACCOMMODATION

TASMANIA

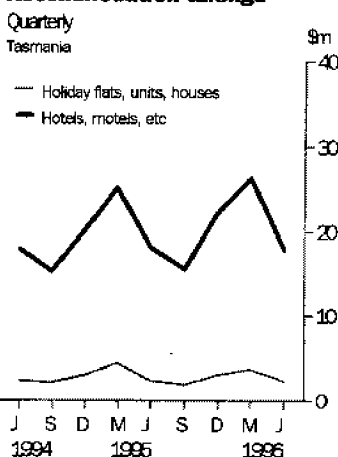
EMBARGOED UNTIL 11:30AM FRI 13 SEPTEMBER 1996

JUNE QTR KEY FIGURES

Occupancy rates



Accommodation takings



	Jun 95	Jun 96	change
Hotels, Motels and Guest Houses			
Rooms available (No.)	5 408	5 523	2.1 %
Room occupancy rate (%)	48.4	46.7	-1.7 pts
Takings from accommodation (\$'000)	17 954	17 815	-0.8 %
Holiday Flats, Units and Houses			
Units, etc. available (No.)	830	846	1.9 %
Unit occupancy rate (%)	43.6	43.3	-0.3 pts
Takings from accommodation (\$'000)	2 343	2 374	1.3 %
Caravan Parks			
Sites, cabins, etc. available (No.)	6 625	6 479	-2.2 %
Site occupancy rate (%)	30.3	30.5	0.2 pts
Takings from accommodation (\$'000)	1 523	1 575	3.4 %
Visitor Hostels			
Bed spaces available (No.)	1 748	1 684	-3.7 %
Bed occupancy rate (%)	12.8	14.3	1.5 pts
Takings from accommodation (\$'000)	226	261	15.5 %

JUNE QTR KEY POINTS

MIXED OCCUPANCY RESULTS

- Demand for accommodation in hotels, motels and guest houses decreased in terms of room nights occupied, while available capacity increased in June quarter 1996 compared with June quarter 1995. The room occupancy rate thus fell by 1.7 percentage points to 46.7%.
- Unit nights occupied in holiday flats, units and houses increased by a lower proportion than an increase in capacity available, resulting in a marginal fall in the unit occupancy rate to 43.3%.
- For caravan parks, demand decreased by a smaller proportion than the decrease in capacity available, resulting in a marginal rise in the site occupancy rate to 30.5%.
- For visitor hostels, available capacity decreased while guest nights increased by 8.0%, resulting in a rise of 1.5 percentage points in the bed occupancy rate to 14.3%.

TAKINGS FROM ACCOMMODATION

- Aggregate takings from accommodation increased in June quarter 1996 compared with June quarter 1995, for each accommodation type other than hotels, motels and guest houses. In terms of average takings per occupied night, moderate increases were recorded for each accommodation type except holiday flats, units and houses for which there was no change.

INQUIRIES

- For further information about these and related statistics, contact Jennifer Cox on 07 3222 6148, or any ABS Office.

NOTES

FORTHCOMING ISSUES

ISSUE (Quarter)

EXPECTED RELEASE DATE

September 1996

13 December 1996

.....

CHANGES IN THIS ISSUE

There are no changes in this issue.

.....

D. ROGERS

Deputy Commonwealth Statistician

TABLE 1 — SUMMARY OF HOTELS, MOTELS AND GUEST HOUSES WITH FACILITIES, TASMANIA

Particulars	Unit	Quarter ended				Year ended			
		March 1995	June 1995	September 1995	December 1995	March 1996	June 1996	June 1995	June 1996
LICENSED HOTELS WITH FACILITIES									
Establishments	No.	91	92	92	92	92	92
Guest rooms	No.	3,511	3,545	3,566	3,566	3,580	3,582
Bed spaces	No.	9,908	9,932	9,946	9,911	9,924	10,015
Employment (persons)	No.	3,500	3,403	3,445	3,772	3,659	3,495
Room nights occupied	No.	209,797	157,516	140,180	186,265	211,766	149,879	690,139	688,090
Room occupancy rate	per cent	66.4	48.8	42.7	56.8	65.0	46.1	53.7	52.7
Guest nights	No.	367,621	261,030	228,065	309,095	371,418	242,777	1,170,494	1,151,355
Bed occupancy rate	per cent	41.2	28.9	24.9	33.9	41.1	26.7	32.4	31.6
Guest arrivals	No.	204,917	139,779	120,236	166,013	201,995	127,544	639,928	615,788
Average length of stay	days	1.8	1.9	1.9	1.9	1.8	1.9	1.8	1.9
Takings from accommodation	\$'000	16,898	12,719	11,026	15,252	17,496	12,129	54,914	55,902
MOTELS AND GUEST HOUSES WITH FACILITIES									
Establishments	No.	86	87	87	88	88	88
Guest rooms	No.	1,869	1,863	1,886	1,937	1,940	1,941
Bed spaces	No.	5,780	5,767	5,781	5,981	6,075	6,028
Employment (persons)	No.	856	749	777	874	884	762
Room nights occupied	No.	120,509	80,573	70,947	102,522	125,440	84,416	363,077	383,325
Room occupancy rate	per cent	71.6	47.6	40.9	57.5	71.1	47.8	54.1	54.4
Guest nights	No.	235,646	148,175	130,033	187,096	237,395	150,164	682,061	704,688
Bed occupancy rate	per cent	45.3	28.3	24.5	34.0	42.9	27.4	32.8	32.3
Guest arrivals	No.	135,180	89,147	74,128	106,934	139,100	92,343	398,970	412,505
Average length of stay	days	1.7	1.7	1.8	1.7	1.7	1.6	1.7	1.7
Takings from accommodation	\$'000	8,064	5,235	4,475	6,838	8,771	5,686	23,390	25,770
TOTAL HOTELS, MOTELS AND GUEST HOUSES WITH FACILITIES									
Establishments	No.	177	179	179	180	180	180
Guest rooms	No.	5,380	5,408	5,452	5,503	5,520	5,523
Bed spaces	No.	15,688	15,699	15,727	15,892	15,999	16,043
Employment (persons)	No.	4,356	4,152	4,222	4,646	4,543	4,257
Room nights occupied	No.	330,306	238,089	211,127	288,787	337,206	234,295	1,053,216	1,071,415
Room occupancy rate	per cent	68.2	48.4	42.1	57.0	67.1	46.7	53.8	53.3
Guest nights	No.	603,267	409,205	358,098	496,191	608,813	392,941	1,852,555	1,856,043
Bed occupancy rate	per cent	42.7	28.7	24.8	33.9	41.8	27.0	32.6	31.9
Guest arrivals	No.	340,097	228,926	194,364	272,947	341,095	219,887	1,038,898	1,028,293
Average length of stay	days	1.8	1.8	1.8	1.8	1.8	1.8	1.8	1.8
Takings from accommodation	\$'000	24,963	17,954	15,501	22,090	26,267	17,815	78,304	81,673

TABLE 2 — SUMMARY OF CARAVAN PARKS, TASMANIA

Particulars	Unit	Quarter ended				Year ended			
		March 1995	June 1995	September 1995	December 1995	March 1996	June 1996	June 1995	June 1996
SHORT-TERM CARAVAN PARKS									
Establishments	No.	63	63	59	59	59	60
Capacity									
On-site vans	No.	272	273	248	259	244	235
Other powered sites	No.	3,090	3,101	2,895	2,907	2,980	2,941
Unpowered sites	No.	2,175	1,932	1,756	1,750	1,768	1,778
Cabins, etc.	No.	338	362	364	376	394	386
Total capacity	No.	5,875	5,668	5,263	5,292	5,386	5,340
Sites occupied by long-term guests	No.	280	269	216	221	211	227
Other sites permanently reserved	No.	1,021	1,018	984	1,050	1,061	1,053
Employment (persons)	No.	227	198	194	225	224	196
Site nights occupied	No.	211,504	156,710	134,839	166,716	213,884	151,778	677,422	667,217
Site occupancy rate	per cent	40.0	30.4	28.1	34.2	43.6	31.2	31.6	34.4
Takings from accommodation	\$'000	2,471	1,237	841	1,544	2,606	1,229	6,031	6,221
LONG-TERM CARAVAN PARKS									
Establishments	No.	12	12	13	13	13	13
Capacity									
On-site vans	No.	121	118	137	121	122	132
Other powered sites	No.	507	504	586	578	573	565
Unpowered sites	No.	233	233	340	360	351	350
Cabins, etc.	No.	98	102	91	89	92	92
Total capacity	No.	959	957	1,154	1,148	1,138	1,139
Sites occupied by long-term guests	No.	190	183	208	198	211	223
Other sites permanently reserved	No.	17	17	25	41	36	33
Employment (persons)	No.	43	40	44	46	49	48
Site nights occupied	No.	29,840	26,124	27,243	29,884	35,972	28,260	105,691	121,359
Site occupancy rate	per cent	34.6	30.0	25.7	28.3	34.7	27.3	30.3	29.0
Takings from accommodation	\$'000	416	286	270	378	520	346	1,232	1,514
TOTAL CARAVAN PARKS									
Establishments	No.	75	75	72	72	72	73
Capacity									
On-site vans	No.	393	391	385	380	366	367
Other powered sites	No.	3,597	3,605	3,481	3,485	3,553	3,506
Unpowered sites	No.	2,408	2,165	2,096	2,110	2,119	2,128
Cabins, etc.	No.	436	464	455	465	486	478
Total capacity	No.	6,834	6,625	6,417	6,440	6,524	6,479
Sites occupied by long-term guests	No.	470	452	424	419	422	450
Other sites permanently reserved	No.	1,038	1,035	1,009	1,091	1,097	1,086
Employment (persons)	No.	270	238	238	271	273	244
Site nights occupied	No.	241,344	182,834	162,082	196,600	249,856	180,038	783,113	788,576
Site occupancy rate	per cent	39.2	30.3	27.7	33.2	42.1	30.5	31.4	33.4
Takings from accommodation	\$'000	2,886	1,523	1,111	1,923	3,126	1,575	7,263	7,735

TABLE 3 — SUMMARY OF HOLIDAY FLATS, UNITS AND HOUSES, TASMANIA

Particulars	Unit	Quarter ended				Year ended			
		March 1995	June 1995	September 1995	December 1995	March 1996	June 1996	June 1995	June 1996
Letting entities	No.	55	54	54	54	54	55
Flats, units and houses									
Single bedroom	No.	272	230	226	235	235	241
Multiple bedroom	No.	595	600	595	595	595	605
Total flats, units and houses	No.	867	830	821	830	830	846
Bed spaces	No.	3,761	3,677	3,665	3,660	3,657	3,696
Employment (persons)	No.	382	295	343	367	356	307
Unit nights occupied	No.	56,752	32,897	28,778	40,351	48,512	33,371	163,710	151,012
Unit occupancy rate	per cent	72.7	43.6	38.3	52.8	64.2	43.3	54.2	49.7
Unit lettings	No.	26,177	15,872	13,236	19,731	23,801	16,116	77,777	72,884
Average length of stay	days	2.2	2.1	2.2	2.0	2.0	2.1	2.1	2.1
Takings from accommodation	\$'000	4,391	2,343	1,933	2,958	3,835	2,374	11,815	11,100

TABLE 4 — SUMMARY OF VISITOR HOSTELS, TASMANIA

Particulars	Unit	Quarter ended				Year ended			
		March 1995	June 1995	September 1995	December 1995	March 1996	June 1996	June 1995	June 1996
Establishments	No.	43	42	41	41	41	40
Bed spaces	No.	1,786	1,748	1,770	1,719	1,727	1,684
Employment (persons)	No.	115	113	95	110	112	105
Guest nights	No.	46,606	20,257	12,804	29,682	48,155	21,872	107,638	112,513
Bed occupancy rate	per cent	29.0	12.8	8.1	18.8	30.6	14.3	16.8	18.0
Guest arrivals	No.	28,328	12,733	8,046	19,053	32,208	13,386	65,685	72,693
Average length of stay	days	1.6	1.6	1.6	1.6	1.5	1.6	1.6	1.5
Takings from accommodation	\$'000	547	226	158	361	580	261	1,295	1,361

TABLE 5 — HOTELS, MOTELS AND GUEST HOUSES WITH FACILITIES BY STAR GRADING, TASMANIA

Particulars	Licensed hotels with facilities	Motels and guest houses	Star grading			Total
			1, 2 and Ungraded	3	4 and 5	
ESTABLISHMENTS, CAPACITY AND EMPLOYMENT						
June quarter 1995 -						
Establishments	92	87	66	86	27	179
Guest rooms	3,545	1,863	1,204	2,663	1,541	5,408
Bed spaces	9,932	5,767	3,380	7,925	4,394	15,699
Employment (persons)	3,403	749	828	1,389	1,935	4,152
June quarter 1996						
Establishments	92	88	64	83	33	180
Guest rooms	3,582	1,941	1,222	2,557	1,744	5,523
Bed spaces	10,015	6,028	3,433	7,642	4,968	16,043
Employment (persons)	3,495	762	813	1,264	2,180	4,257
ROOM NIGHTS OCCUPIED						
June quarter 1995	157,516	80,573	38,901	109,944	89,244	238,089
1996—						
April	58,512	34,613	15,492	43,349	34,284	93,125
May	50,542	27,725	11,719	33,408	33,140	78,267
June	40,825	22,078	9,109	27,345	26,449	62,903
June quarter 1996	149,879	84,416	36,320	104,102	93,873	234,295
ROOM OCCUPANCY RATES (per cent)						
June quarter 1995	48.8	47.6	35.6	45.4	63.6	48.4
1996—						
April	54.5	59.4	42.3	56.5	65.5	56.2
May	45.5	46.1	30.9	42.1	61.3	45.7
June	38.4	37.9	25.7	35.6	50.6	38.2
June quarter 1996	46.1	47.8	33.0	44.7	59.1	46.7
GUEST NIGHTS						
June quarter 1995	261,030	148,175	68,345	198,820	142,040	409,205
1996						
April	101,815	64,704	27,585	81,599	57,335	166,519
May	75,805	46,077	18,559	55,679	47,644	121,882
June	65,157	39,383	15,592	48,936	40,012	104,540
June quarter 1996	242,777	150,164	61,736	186,214	144,991	392,941
BED OCCUPANCY RATES (per cent)						
June quarter 1995	28.9	28.3	22.2	27.6	35.5	28.7
1996—						
April	33.9	35.8	26.8	35.6	38.5	34.6
May	24.4	24.7	17.4	23.5	30.9	24.5
June	21.9	21.8	15.5	21.3	26.8	21.8
June quarter 1996	26.7	27.4	19.9	26.8	32.1	27.0
GUEST ARRIVALS						
June quarter 1995	139,779	89,147	43,824	120,077	65,025	228,926
1996—						
April	54,385	42,362	16,376	51,930	28,441	96,747
May	39,703	26,805	11,006	31,654	23,848	66,508
June	33,456	23,176	9,270	27,455	19,907	56,632
June quarter 1996	127,544	92,343	36,652	111,039	72,196	219,887
AVERAGE LENGTH OF STAY (days)						
June quarter 1995	1.9	1.7	1.6	1.7	2.2	1.8
June quarter 1996	1.9	1.6	1.7	1.7	2.0	1.8
TAKINGS FROM ACCOMMODATION (\$'000)						
June quarter 1995	12,719	5,235	2,407	6,759	8,787	17,954
1996—						
April	4,936	2,417	1,002	2,938	3,412	7,353
May	3,962	1,804	485	2,080	3,202	5,766
June	3,231	1,466	519	1,706	2,471	4,696
June quarter 1996	12,129	5,686	2,006	6,724	9,085	17,815

TABLE 6 — HOTELS, MOTELS AND GUEST HOUSES WITH FACILITIES BY ESTABLISHMENT SIZE, TASMANIA

	Establishment size (No. of rooms)						
Particulars	5-9	10-15	16-25	26-50	51-100	101+	Total
ESTABLISHMENTS, CAPACITY AND EMPLOYMENT							
June quarter 1995—							
Establishments	43	29	30	50	19	8	179
Guest rooms	305	331	613	1,701	1,210	1,248	5,408
Bed spaces	779	905	1,737	5,123	3,729	3,426	15,699
Employment (persons)	223	299	379	947	617	1,687	4,152
June quarter 1996							
Establishments	43	29	30	50	20	8	180
Guest rooms	310	335	614	1,717	1,299	1,248	5,523
Bed spaces	764	1,003	1,717	5,096	4,048	3,415	16,043
Employment (persons)	286	302	370	877	660	1,762	4,257
ROOM NIGHTS OCCUPIED							
June quarter 1995	10,831	12,048	22,957	73,641	47,646	70,966	238,089
1996—							
April	4,391	4,886	9,537	28,653	21,314	24,344	93,125
May	3,721	3,996	7,213	23,795	16,804	22,738	78,267
June	2,965	3,108	5,553	18,933	14,501	17,843	62,903
June quarter 1996	11,077	11,990	22,303	71,381	52,619	64,925	234,295
ROOM OCCUPANCY RATES (per cent)							
June quarter 1995	39.2	40.0	41.2	47.6	43.3	62.5	48.4
1996—							
April	47.2	48.6	51.8	55.6	54.7	65.0	56.2
May	38.7	38.5	37.9	44.7	41.7	58.8	45.7
June	32.5	30.9	30.1	36.8	38.2	47.7	38.2
June quarter 1996	39.5	39.3	39.9	45.7	44.9	57.2	46.7
GUEST NIGHTS							
June quarter 1995	16,999	20,779	40,378	131,601	89,644	109,804	409,205
1996—							
April	7,460	8,571	16,637	52,122	41,571	40,158	166,519
May	5,840	6,039	11,513	37,968	27,402	33,120	121,882
June	4,607	4,878	9,857	32,305	25,096	27,797	104,540
June quarter 1996	17,907	19,488	38,007	122,395	94,069	101,075	392,941
BED OCCUPANCY RATES (per cent)							
June quarter 1995	24.1	25.2	25.5	28.2	26.4	35.2	28.7
1996—							
April	32.5	28.5	32.3	34.1	34.2	39.2	34.6
May	24.7	19.4	21.6	24.0	21.8	31.3	24.5
June	20.4	16.2	19.1	21.1	21.0	27.1	21.8
June quarter 1996	25.9	21.4	24.3	26.4	25.7	32.5	27.0
GUEST ARRIVALS							
June quarter 1995	11,011	12,548	24,656	81,822	54,618	44,271	228,926
1996—							
April	8,505	5,081	9,485	31,092	26,660	15,924	96,747
May	3,795	3,748	6,512	22,383	16,206	13,864	66,508
June	3,006	3,102	5,819	18,631	14,144	11,930	56,632
June quarter 1996	15,306	11,931	21,816	72,106	57,010	41,718	219,887
AVERAGE LENGTH OF STAY (days)							
June quarter 1995	1.5	1.7	1.6	1.6	1.6	2.5	1.8
June quarter 1996	1.2	1.6	1.7	1.7	1.7	2.4	1.8
TAKINGS FROM ACCOMMODATION (\$'000)							
June quarter 1995	588	680	1,268	4,645	3,849	6,923	17,954
1996—							
April	257	308	577	1,828	1,977	2,405	7,353
May	215	231	397	1,479	1,160	2,284	5,766
June	167	185	320	1,165	1,138	1,721	4,696
June quarter 1996	638	725	1,295	4,472	4,276	6,410	17,815

TABLE 7 — HOTELS, MOTELS AND GUEST HOUSES WITH FACILITIES BY STATISTICAL DIVISION, TASMANIA

Particulars	Greater Hobart (SD)			Southern (SD)			Northern (SD)		
	Licensed hotels with facilities	Motels and guest houses	Total	Licensed hotels with facilities	Motels and guest houses	Total	Licensed hotels with facilities	Motels and guest houses	Total
ESTABLISHMENTS, CAPACITY AND EMPLOYMENT									
June quarter 1995—									
Establishments	23	27	50	14	10	24	32	23	55
Guest rooms	1,220	648	1,868	477	118	595	1,130	431	1,561
Bed spaces	3,176	1,996	5,172	1,456	411	1,867	3,326	1,397	4,723
Employment (persons)	1,533	275	1,808	235	60	295	1,116	142	1,258
June quarter 1996—									
Establishments	23	27	50	14	9	23	32	24	56
Guest rooms	1,217	663	1,880	480	132	612	1,150	469	1,619
Bed spaces	3,173	2,016	5,189	1,450	519	1,969	3,372	1,507	4,879
Employment (persons)	1,515	278	1,793	250	67	317	1,211	139	1,350
ROOM NIGHTS OCCUPIED									
June quarter 1995	65,940	31,723	97,663	13,448	4,857	18,305	51,833	19,623	71,456
1996—									
April	22,353	12,459	34,812	5,668	2,524	8,192	19,080	8,483	27,563
May	21,102	10,935	32,037	3,330	1,397	4,727	17,654	7,321	24,975
June	17,083	9,621	26,704	3,072	1,135	4,207	14,291	5,396	19,687
June quarter 1996	60,538	33,015	93,553	12,070	5,056	17,126	51,025	21,200	72,225
ROOM OCCUPANCY RATES (per cent)									
June quarter 1995	59.4	53.8	57.5	31.0	45.2	33.8	50.4	50.2	50.4
1996—									
April	61.2	62.6	61.7	39.4	63.7	44.6	55.3	60.3	56.7
May	55.9	53.2	55.0	22.4	34.1	24.9	49.5	50.4	49.8
June	46.8	48.4	47.3	22.9	28.7	24.2	41.7	38.4	40.7
June quarter 1996	54.7	54.7	54.7	28.3	42.1	31.3	48.8	49.7	49.1
GUEST NIGHTS									
June quarter 1995	104,789	58,407	163,196	28,055	10,447	38,502	84,383	36,815	121,198
1996—									
April	37,876	24,062	61,938	11,633	5,899	17,532	33,409	15,208	48,617
May	31,288	18,516	49,804	5,969	2,764	8,733	25,950	12,178	38,128
June	26,580	17,212	43,792	6,242	2,541	8,783	22,551	9,636	32,187
June quarter 1996	95,744	59,790	155,534	23,844	11,204	35,048	81,910	37,022	118,932
BED OCCUPANCY RATES (per cent)									
June quarter 1995	36.3	32.2	34.7	21.2	27.9	22.7	27.9	29.0	28.2
1996—									
April	39.8	39.8	39.8	26.7	37.9	29.7	33.0	33.6	33.2
May	31.8	29.6	31.0	13.3	17.2	14.3	24.8	26.1	25.2
June	27.9	28.5	28.1	15.1	16.3	15.4	22.4	21.3	22.0
June quarter 1996	33.2	32.6	32.9	18.4	23.7	19.8	26.7	27.0	26.8
GUEST ARRIVALS									
June quarter 1995	42,580	29,439	72,019	22,051	7,822	29,873	45,723	21,998	67,721
1996—									
April	15,743	13,122	28,865	9,338	7,272	16,610	16,681	8,837	25,518
May	13,151	9,980	23,131	4,737	1,813	6,550	13,293	7,048	20,341
June	11,843	10,055	21,898	4,460	1,526	5,986	10,927	5,356	16,283
June quarter 1996	40,737	33,157	73,894	18,535	10,611	29,146	40,901	21,241	62,142
AVERAGE LENGTH OF STAY (days)									
June quarter 1995	2.5	2.0	2.3	1.3	1.3	1.3	1.8	1.7	1.8
June quarter 1996	2.4	1.8	2.1	1.3	1.1	1.2	2.0	1.7	1.9
TAKINGS FROM ACCOMMODATION (\$'000)									
June quarter 1995	6,226	1,942	8,168	834	460	1,294	3,750	1,183	4,933
1996—									
April	2,090	796	2,886	383	294	677	1,553	527	2,080
May	2,012	671	2,683	215	142	357	1,329	444	1,773
June	1,546	603	2,148	190	123	312	1,039	314	1,353
June quarter 1996	5,648	2,070	7,718	788	559	1,347	3,921	1,285	5,206

TABLE 7 — HOTELS, MOTELS AND GUEST HOUSES WITH FACILITIES BY STATISTICAL DIVISION,
TASMANIA—continued

Particulars	Mersey-Lyell (SD)			Total Tasmania			East Coast (a)
	Licensed hotels with facilities	Motels and guest houses	Total	Licensed hotels with facilities	Motels and guest houses	Total	Total
ESTABLISHMENTS, CAPACITY AND EMPLOYMENT							
June quarter 1995—							
Establishments	23	27	50	92	87	179	14
Guest rooms	718	666	1,384	3,545	1,863	5,408	465
Bed spaces	1,974	1,963	3,937	9,932	5,767	15,699	1,481
Employment (persons)	519	272	791	3,403	749	4,152	259
June quarter 1996							
Establishments	23	28	51	92	88	180	14
Guest rooms	735	677	1,412	3,582	1,941	5,523	487
Bed spaces	2,020	1,986	4,006	10,015	6,028	16,043	1,613
Employment (persons)	519	278	797	3,495	762	4,257	271
ROOM NIGHTS OCCUPIED							
June quarter 1995	26,295	24,370	50,665	157,516	80,573	238,089	14,594
1996—							
April	11,411	11,147	22,558	58,512	34,613	93,125	6,331
May	8,456	8,072	16,528	50,542	27,725	78,267	3,445
June	6,379	5,926	12,305	40,825	22,078	62,903	3,612
June quarter 1996	26,246	25,145	51,391	149,879	84,416	234,295	13,388
ROOM OCCUPANCY RATES (per cent)							
June quarter 1995	40.2	40.2	40.2	48.8	47.6	48.4	34.5
1996—							
April	51.8	54.9	53.3	54.5	59.4	56.2	43.3
May	37.1	38.5	37.8	45.5	46.1	45.7	22.8
June	28.9	29.2	29.0	38.4	37.9	38.2	24.7
June quarter 1996	39.2	40.8	40.0	46.1	47.8	46.7	30.2
GUEST NIGHTS							
June quarter 1995	43,803	42,506	86,309	261,030	148,175	409,205	30,391
1996—							
April	18,897	19,535	38,432	101,815	64,704	166,519	13,461
May	12,598	12,619	25,217	75,805	46,077	121,882	6,524
June	9,784	9,994	19,778	65,157	39,383	104,540	7,690
June quarter 1996	41,279	42,148	83,427	242,777	150,164	392,941	27,675
BED OCCUPANCY RATES (per cent)							
June quarter 1995	24.4	23.8	24.1	28.9	28.3	28.7	22.6
1996—							
April	31.2	32.8	32.0	33.9	35.8	34.6	27.8
May	20.1	20.5	20.3	24.4	24.7	24.5	13.0
June	16.1	16.8	16.5	21.9	21.8	21.8	15.9
June quarter 1996	22.5	23.3	22.9	26.7	27.4	27.0	18.9
GUEST ARRIVALS							
June quarter 1995	29,425	29,888	59,313	139,779	89,147	228,926	22,884
1996—							
April	12,623	13,131	25,754	54,385	42,362	96,747	9,530
May	8,522	7,964	16,486	39,703	26,805	66,508	4,961
June	6,226	6,239	12,465	33,456	23,176	56,632	5,015
June quarter 1996	27,371	27,334	54,705	127,544	92,343	219,887	19,506
AVERAGE LENGTH OF STAY (days)							
June quarter 1995	1.5	1.4	1.5	1.9	1.7	1.8	1.3
June quarter 1996	1.5	1.5	1.5	1.9	1.6	1.8	1.4
TAKINGS FROM ACCOMMODATION (\$'000)							
June quarter 1995	1,908	1,650	3,558	12,719	5,235	17,954	1,002
1996—							
April	910	800	1,710	4,936	2,417	7,353	520
May	406	546	953	3,962	1,804	5,766	243
June	456	426	883	3,231	1,466	4,696	261
June quarter 1996	1,772	1,773	3,545	12,129	5,686	17,815	1,024

(a) The East Coast Tourist Area comprises Glamorgan/Spring Bay (M) and Break O'Day (M).

TABLE 8 — HOTELS, MOTELS AND GUEST HOUSES WITH FACILITIES: STATISTICAL DIVISIONS

Statistical Divisions and selected Statistical Local Areas	Establish- ments	Guest rooms	Bed spaces	Employ- ment (persons)	Room nights occupied				Room occupancy rates (per cent)			
					Apr.	May	June	June qtr	Apr.	May	June	June qtr
Clarence (C)	4	51	156	61	784	579	444	1,807	51.2	36.6	29.0	38.9
Glenorchy (C)	6	162	417	87	2,767	2,000	1,939	6,706	56.9	39.8	39.9	45.5
Hobart (C)												
Inner	6	432	1,052	194	7,998	7,079	6,370	21,447	61.7	52.9	49.2	54.6
Remainder	29	1,162	3,356	1,399	22,434	21,675	17,509	61,618	64.4	60.2	50.2	58.3
Total	35	1,594	4,408	1,593	30,432	28,754	23,879	83,065	63.6	58.2	49.9	57.3
Balance	5	73	208	52	829	704	442	1,975	37.9	31.1	20.2	29.7
Greater Hobart (SD)	50	1,880	5,189	1,793	34,812	32,037	26,704	93,553	61.7	55.0	47.3	54.7
Glamorgan/Spring Bay (M)	9	325	1,184	186	4,798	2,530	2,604	9,932	49.2	25.1	26.7	33.6
Tasman (M)	6	136	427	76	2,193	1,446	868	4,507	53.8	34.3	21.3	36.4
Balance	8	151	358	55	1,201	751	735	2,687	26.5	16.0	20.9	21.1
Southern (SD)	23	612	1,969	317	8,192	4,727	4,207	17,126	44.6	24.9	24.2	31.3
Break O'Day (M)	5	162	429	85	1,533	915	1,008	3,456	31.5	18.2	20.7	23.4
Launceston (C)												
Inner	10	474	1,335	351	9,300	9,508	7,374	26,182	65.4	64.7	52.6	61.0
Parts B & C	23	618	2,041	300	10,682	9,606	6,966	27,254	57.6	50.1	37.6	48.5
Total	33	1,092	3,376	651	19,982	19,114	14,340	53,436	61.0	56.5	44.0	53.9
Northern Midlands (M) Pts A & B	3	25	67	20	404	347	168	919	53.9	44.8	22.4	40.4
West Tamar (M) Pts A & B	7	124	381	112	1,471	1,298	1,234	4,003	39.5	33.8	33.2	35.5
Balance	8	216	626	482	4,173	3,301	2,937	10,411	64.4	49.3	45.3	53.0
Northern (SD)	56	1,619	4,879	1,350	27,563	24,975	19,687	72,225	56.7	49.8	40.7	49.1
Burnie (C) — Pts A & B	8	237	574	136	3,417	3,439	2,538	9,394	48.1	46.8	35.7	43.6
Central Coast (M) — Pts A & B	5	115	291	74	1,270	1,159	963	3,392	36.8	32.5	27.9	32.4
Circular Head (M)	3	94	236	71	1,691	1,088	795	3,574	60.0	37.3	28.2	41.8
Devonport (C)	9	242	706	131	3,488	2,691	2,055	8,234	48.0	35.9	28.3	37.4
Waratah/Wynyard (M) — Pts A & B	8	137	352	70	1,456	913	795	3,164	35.4	21.5	19.3	25.4
West Coast (M)	11	420	1,210	177	7,423	4,654	3,209	15,286	58.9	35.7	25.5	40.0
Balance	7	167	637	138	3,813	2,584	1,950	8,347	76.1	49.9	38.9	54.9
Mersey-Lyell (SD)	51	1,412	4,006	797	22,558	16,528	12,305	51,391	53.3	37.8	29.0	40.0
Total Tasmania	180	5,523	16,043	4,257	93,125	78,267	62,903	234,295	56.2	45.7	38.2	46.7

AND SELECTED STATISTICAL LOCAL AREAS, TASMANIA, JUNE QUARTER 1996

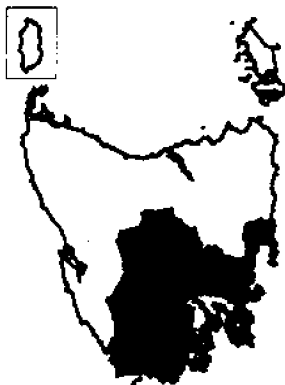
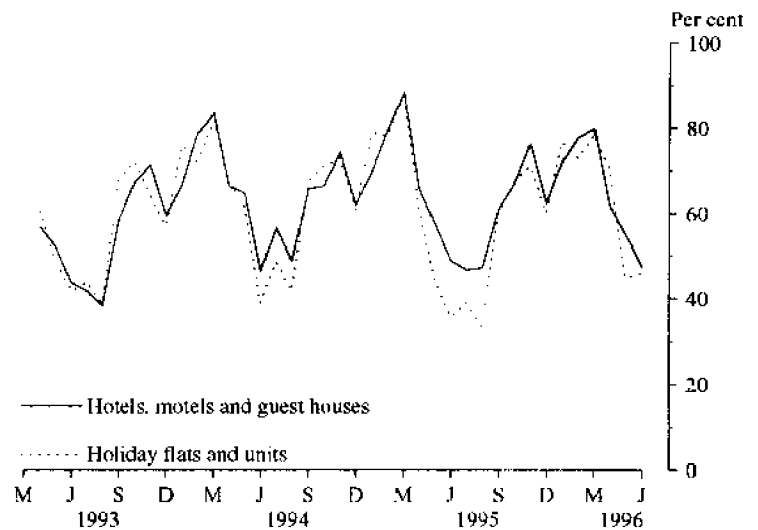
<i>Guest nights</i>				<i>Guest arrivals</i>				<i>Takings from accommodation (\$'000)</i>			
<i>Apr.</i>	<i>May</i>	<i>June</i>	<i>June qtr</i>	<i>Apr.</i>	<i>May</i>	<i>June</i>	<i>June qtr</i>	<i>Apr.</i>	<i>May</i>	<i>June</i>	<i>June qtr</i>
1,643	1,022	807	3,472	1,037	693	577	2,307	60	40	35	135
4,823	3,192	3,234	11,249	2,278	1,593	1,810	5,681	139	98	93	330
13,519	10,650	10,002	34,171	6,493	4,925	4,667	16,085	597	519	451	1,567
40,387	33,880	28,941	103,208	18,067	15,218	14,300	47,585	2,042	1,992	1,545	5,579
53,906	44,530	38,943	137,379	24,560	20,143	18,967	63,670	2,639	2,511	1,995	7,146
1,566	1,060	808	3,434	990	702	544	2,236	48	34	25	107
61,938	49,804	43,792	155,534	28,865	23,131	21,898	73,894	2,886	2,683	2,148	7,718
10,560	4,960	5,589	21,109	7,273	3,719	3,750	14,742	434	198	205	837
4,853	2,559	1,898	9,310	4,120	2,006	1,433	7,559	167	105	63	334
2,119	1,214	1,296	4,629	5,217	825	803	6,845	77	54	44	175
17,532	8,733	8,783	35,048	16,610	6,550	5,986	29,146	677	357	312	1,347
2,901	1,564	2,101	6,566	2,257	1,242	1,265	4,764	86	45	55	186
14,853	12,829	10,338	38,020	7,314	6,095	4,675	18,084	754	724	511	1,988
20,062	16,039	12,475	48,576	11,011	8,985	6,921	26,917	746	611	443	1,800
34,915	28,868	22,813	86,596	18,325	15,080	11,596	45,001	1,500	1,336	953	3,788
760	516	386	1,662	430	380	363	1,173	21	13	8	41
2,767	2,079	2,136	6,982	1,573	1,214	1,098	3,885	93	80	74	246
7,274	5,101	4,751	17,126	2,933	2,425	1,961	7,319	380	301	263	944
48,617	38,128	32,187	118,932	25,518	20,341	16,283	62,142	2,080	1,773	1,353	5,206
4,858	4,436	3,299	12,593	3,405	2,965	2,250	8,620	216	236	164	615
2,015	1,602	1,409	5,026	1,319	1,074	977	3,370	62	55	48	165
2,801	1,664	1,233	5,698	1,790	1,227	880	3,897	93	60	43	196
5,191	3,683	2,863	11,737	3,718	2,721	2,142	8,581	243	186	144	573
2,662	1,651	1,711	6,024	1,701	1,113	1,037	3,851	84	56	44	185
13,074	7,224	5,343	25,641	8,984	4,276	3,035	16,295	510	270	218	998
7,831	4,957	3,920	16,708	4,837	3,110	2,144	10,091	502	89	222	813
38,432	25,217	19,778	83,427	25,754	16,486	12,465	54,705	1,710	953	883	3,545
166,519	121,882	104,540	392,941	96,747	66,508	56,632	219,887	7,353	5,766	4,696	17,815

MONTHLY ROOM/UNIT OCCUPANCY RATES

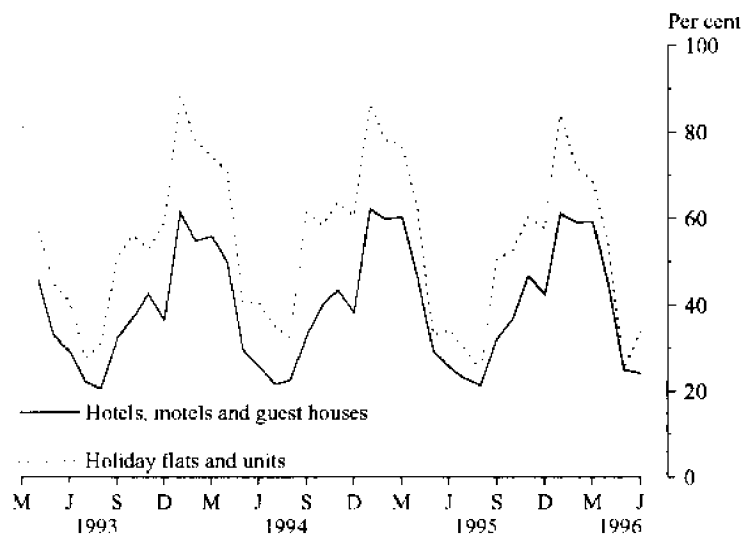
Graphs on these pages compare room occupancy rates for hotels, motels and guest houses with facilities with unit occupancy rates for holiday unit establishments for each Statistical Division and the East Coast Tourist area.



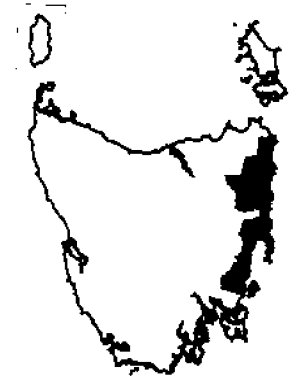
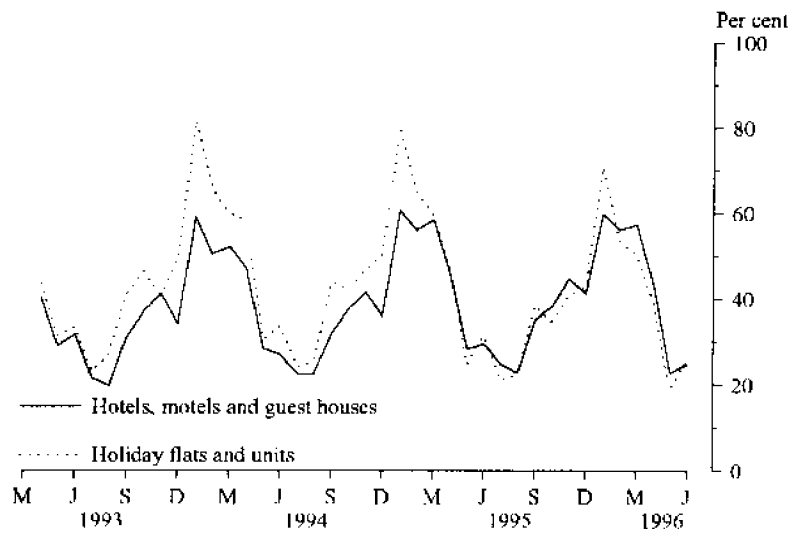
GREATER HOBART STATISTICAL DIVISION



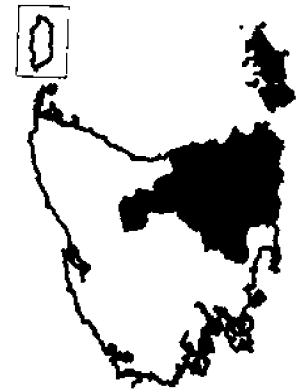
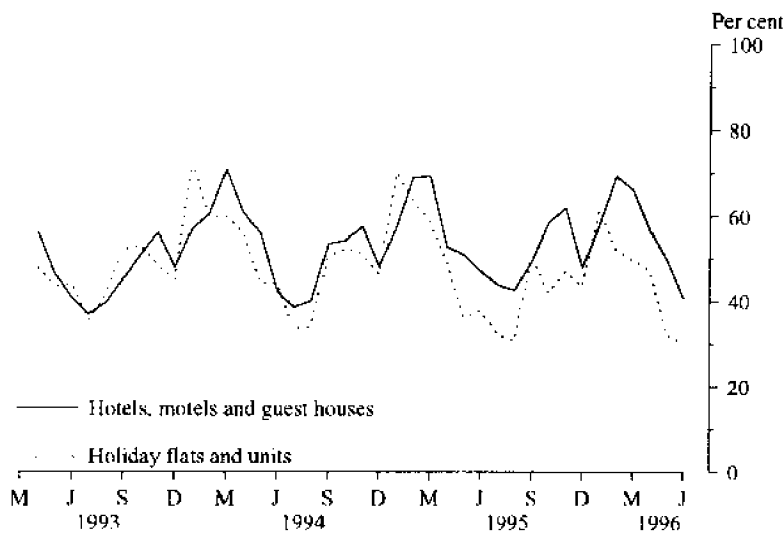
SOUTHERN STATISTICAL DIVISION



EAST COAST TOURIST AREA



NORTHERN STATISTICAL DIVISION



MERSEY-LYELL STATISTICAL DIVISION

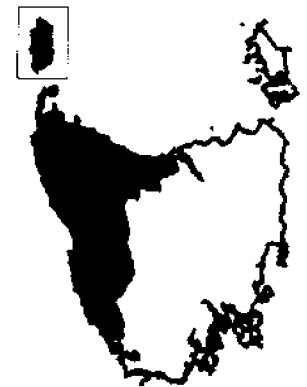
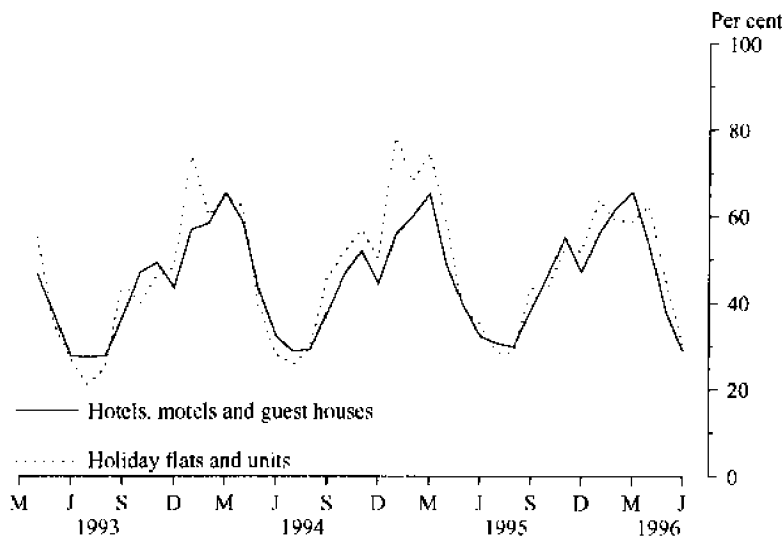


TABLE 9 — HOLIDAY FLATS, UNITS AND HOUSES BY STATISTICAL DIVISION AND SELECTED STATISTICAL AREAS, TASMANIA

Particulars	Northern (SD)					Mersey-Lyell (SD)	Total Tasmania	East Coast (a)
	Greater Hobart (SD)	Southern (SD)	Greater Launceston and Central North (SSDs)	North Eastern (SSD)	Total			
LETTING ENTITIES, CAPACITY AND EMPLOYMENT								
June quarter 1995								
Letting entities	13	9	11	7	18	14	54	11
Flats, units and houses								
Single bedroom	48	21	93	29	122	39	230	40
Multiple bedroom	184	81	139	72	211	124	600	96
Total flats, units and houses	232	102	232	101	333	163	830	136
Bed spaces	1,034	511	902	476	1,378	754	3,677	627
Employment (persons)	72	46	97	30	127	50	295	52
June quarter 1996—								
Letting entities	13	9	11	7	18	15	55	11
Flats, units and houses								
Single bedroom	50	21	90	28	118	52	241	39
Multiple bedroom	184	80	142	73	215	126	605	97
Total flats, units and houses	234	101	232	101	333	178	846	136
Bed spaces	1,038	485	905	473	1,378	795	3,696	627
Employment (persons)	62	39	132	21	153	53	307	40
UNIT NIGHTS OCCUPIED								
June quarter 1995	9,926	4,010	9,660	2,742	12,402	6,559	32,897	4,241
1996—								
April	4,936	1,628	3,740	980	4,720	3,336	14,620	1,591
May	3,242	792	2,753	573	3,326	2,460	9,820	791
June	3,232	1,028	2,409	625	3,034	1,637	8,931	1,056
June quarter 1996	11,410	3,448	8,902	2,178	11,080	7,433	33,371	3,438
UNIT OCCUPANCY RATES (per cent)								
June quarter 1995	47.0	43.2	45.8	29.8	40.9	44.2	43.6	34.3
1996—								
April	70.3	53.7	53.7	32.3	47.2	62.5	57.6	39.0
May	44.7	25.3	38.3	18.3	32.2	44.6	37.4	18.8
June	46.0	33.9	34.6	20.6	30.4	30.7	35.2	25.9
June quarter 1996	53.6	37.5	42.2	23.7	36.6	45.9	43.3	27.8
UNIT LETTINGS								
June quarter 1995	3,827	2,511	4,820	1,220	6,040	3,494	15,872	2,246
1996—								
April	1,693	1,079	2,008	491	2,499	2,045	7,316	924
May	1,125	496	1,392	279	1,671	1,389	4,681	453
June	1,136	581	1,317	275	1,592	810	4,119	500
June quarter 1996	3,954	2,156	4,717	1,045	5,762	4,244	16,116	1,877
AVERAGE LENGTH OF STAY (days)								
June quarter 1995	2.6	1.6	2.0	2.2	2.1	1.9	2.1	1.9
1996—								
April	2.9	1.5	1.9	2.0	1.9	1.6	2.0	1.7
May	2.9	1.6	2.0	2.1	2.0	1.8	2.1	1.7
June	2.8	1.8	1.8	2.3	1.9	2.0	2.2	2.1
June quarter 1996	2.9	1.6	1.9	2.1	1.9	1.8	2.1	1.8
TAKINGS FROM ACCOMMODATION (\$'000)								
June quarter 1995	708	306	792	134	927	402	2,343	292
1996—								
April	349	147	332	56	388	206	1,090	132
May	212	57	231	34	265	139	674	56
June	211	81	204	28	232	88	611	71
June quarter 1996	772	284	768	117	885	433	2,374	259

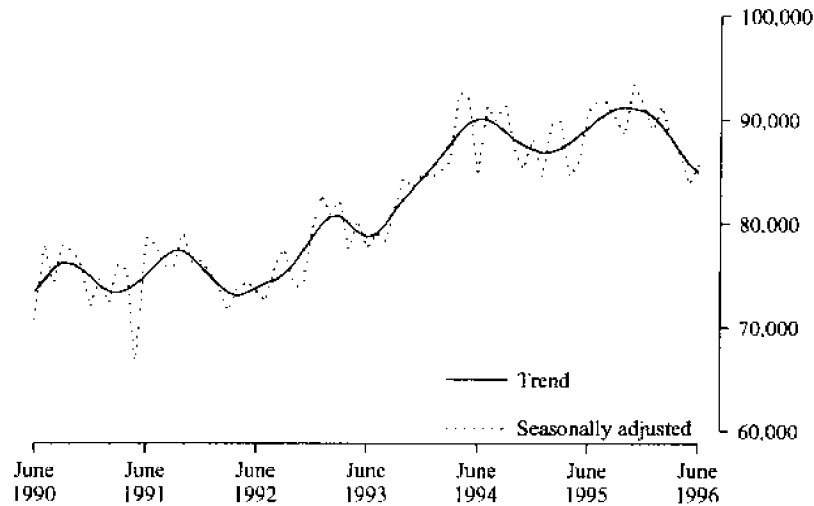
(a) The East Coast Tourist Area comprises Glamorgan/Spring Bay (M) and Break O'Day (M).

TABLE 10 — CARAVAN PARKS BY STATISTICAL DIVISION AND SELECTED STATISTICAL AREAS, TASMANIA

Particulars	Northern (SD)					Mersey-Lyell (SD)	Total Tasmania	East Coast (a)
	Greater Hobart (SD)	Southern (SD)	Greater Launceston and Central North (SSDs)	North Eastern (SSD)	Total			
ESTABLISHMENTS, CAPACITY AND EMPLOYMENT								
June quarter 1995—								
Establishments	8	18	12	8	20	29	75	11
Capacity								
On-site vans	79	67	56	25	81	164	391	56
Other powered sites	295	791	487	538	1,025	1,494	3,605	661
Unpowered sites	266	381	307	544	851	667	2,165	520
Cabins, flats, etc.	64	125	73	20	93	182	464	77
Total capacity	704	1,364	923	1,127	2,050	2,507	6,625	1,314
Sites occupied by long-term guests	94	29	84	8	92	237	452	33
Other sites permanently reserved	8	329	102	294	396	302	1,035	351
Employment (persons)	31	60	35	24	59	88	238	42
June quarter 1996—								
Establishments	7	18	12	8	20	28	73	11
Capacity								
On-site vans	66	65	55	23	78	158	367	52
Other powered sites	248	801	482	511	993	1,464	3,506	674
Unpowered sites	257	357	317	556	873	641	2,128	505
Cabins, flats, etc.	65	145	75	20	95	173	478	87
Total capacity	636	1,368	929	1,110	2,039	2,436	6,479	1,318
Sites occupied by long-term guests	68	23	75	11	86	273	450	30
Other sites permanently reserved	9	339	102	302	404	334	1,086	362
Employment (persons)	35	65	36	24	60	84	244	47
SITE NIGHTS OCCUPIED								
June quarter 1995	16,419	42,202	24,720	33,206	57,926	66,287	182,834	44,397
1996—								
April	4,565	16,063	9,946	11,092	21,038	24,253	65,919	15,470
May	4,308	13,013	8,501	10,833	19,334	22,429	59,084	13,973
June	3,053	12,472	7,537	10,678	18,215	21,295	55,035	13,788
June quarter 1996	11,926	41,548	25,984	32,603	58,587	67,977	180,038	43,231
SITE OCCUPANCY RATES (per cent)								
June quarter 1995	25.6	34.0	29.4	32.4	31.1	29.1	30.3	37.1
1996 -								
April	23.9	39.1	35.7	33.3	34.4	33.2	33.9	39.1
May	21.9	30.7	29.5	31.5	30.6	29.7	29.4	34.2
June	16.0	30.4	27.0	32.1	29.8	29.1	28.3	34.9
June quarter 1996	20.6	33.4	30.7	32.3	31.6	30.7	30.5	36.0
TAKINGS FROM ACCOMMODATION (\$'000)								
June quarter 1995	314	350	264	89	353	505	1,523	275
1996—								
April	106	195	131	47	178	233	712	141
May	78	90	89	23	112	187	467	70
June	55	84	68	27	95	162	395	72
June quarter 1996	238	369	288	97	385	582	1,575	283

(a) The East Coast Tourist Area comprises Glamorgan/Spring Bay (M) and Break O'Day (M).

HOTEL/MOTEL ROOM NIGHTS



HOLIDAY UNIT NIGHTS

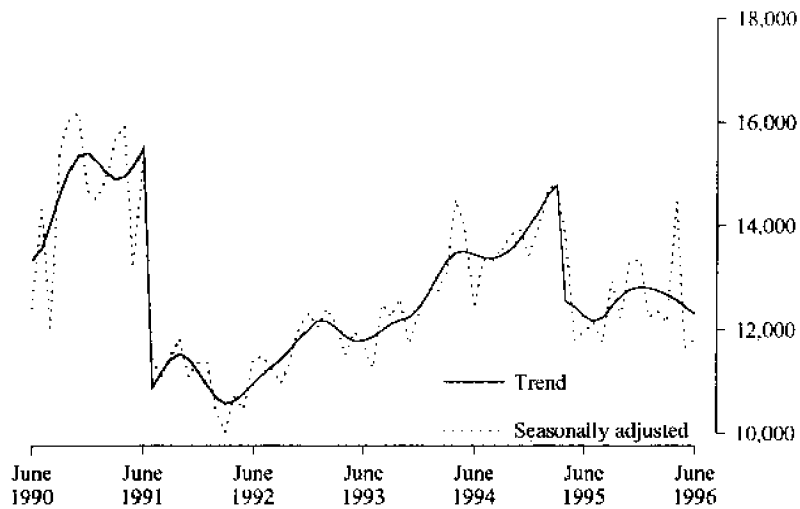


TABLE 11. HOTEL & MOTEL ETC. ROOM NIGHTS, HOLIDAY UNIT NIGHTS AND CARAVAN PARK SITE NIGHTS: SEASONALLY ADJUSTED AND TREND ESTIMATES

		Hotel, motel etc. with facilities, room nights		Holiday unit nights		Caravan park site nights	
		Seasonally adjusted	Trend	Seasonally adjusted	Trend	Seasonally adjusted	Trend
1994	April	92,505	88,723	14,516	13,481	64,127	61,190
	May	92,211	89,629	13,977	13,501	61,494	62,200
	June	84,624	90,071	12,407	13,439	60,791	63,185
	July	91,256	90,054	13,339	13,384	65,090	64,111
	August	89,909	89,551	13,333	13,370	65,978	64,925
	September	91,464	88,751	13,543	13,428	64,782	65,522
	October	87,143	88,037	13,821	13,544	66,032	65,758
	November	85,236	87,545	13,932	13,743	66,767	65,634
	December	88,136	87,108	13,433	14,000	65,194	65,284
1995	January	84,462	86,826	14,001	14,297	63,575	65,044
	February	89,522	86,896	14,704	14,601	65,183	65,070
	March	89,885	87,220	14,828	14,780	64,164	65,209
	April	84,545	87,811	13,749	12,543	67,308	65,390
	May	85,913	88,469	11,809	12,428	65,379	65,540
	June	90,857	89,209	11,956	12,252	65,727	65,523
	July	91,724	90,010	12,144	12,158	65,084	65,398
	August	91,661	90,657	11,760	12,233	64,125	65,309
	September	90,106	91,103	12,918	12,446	66,559	65,272
	October	88,438	91,208	12,224	12,641	64,974	65,396
	November	93,421	91,108	13,331	12,773	65,367	65,686
	December	91,340	90,882	13,329	12,820	66,831	65,882
1996	January	88,997	90,363	12,240	12,809	64,854	65,954
	February	91,402	89,414	12,353	12,747	65,465	65,928
	March	87,965	88,162	12,136	12,667	69,259	65,908
	April	86,789	86,889	14,486	12,565	63,649	65,913
	May	83,759	85,719	11,651	12,426	63,992	65,960
	June	85,705	84,912	11,829	12,296	68,240	66,035

TABLE 12 — VISITOR HOSTELS BY STATISTICAL DIVISION, TASMANIA

<i>Particulars</i>	<i>Greater Hobart (SD)</i>	<i>Southern (SD)</i>	<i>Northern (SD)</i>	<i>Mersey-Lyell (SD)</i>	<i>Total Tasmania</i>
ESTABLISHMENTS, CAPACITY AND EMPLOYMENT					
<i>June quarter 1995</i>					
Establishments	8	16	9	9	42
Bed spaces	442	437	295	574	1,748
Employment (persons)	43	32	15	23	113
<i>June quarter 1996</i>					
Establishments	6	15	11	8	40
Bed spaces	321	488	333	542	1,684
Employment (persons)	30	36	18	21	105
GUEST NIGHTS					
<i>June quarter 1995</i>	<i>7,125</i>	<i>5,432</i>	<i>2,250</i>	<i>5,450</i>	<i>20,257</i>
<i>1996—</i>					
April	3,644	3,503	1,281	3,520	11,948
May	2,312	1,316	463	1,334	5,425
June	1,620	1,032	498	1,349	4,499
<i>June quarter 1996</i>	<i>7,576</i>	<i>5,851</i>	<i>2,242</i>	<i>6,203</i>	<i>21,872</i>
BED OCCUPANCY RATES (per cent)					
<i>June quarter 1995</i>	<i>17.7</i>	<i>13.7</i>	<i>8.4</i>	<i>10.6</i>	<i>12.8</i>
<i>1996—</i>					
April	37.8	23.9	12.8	21.6	23.7
May	23.2	8.7	4.7	7.9	10.5
June	16.8	7.0	5.2	8.3	9.0
<i>June quarter 1996</i>	<i>25.9</i>	<i>13.2</i>	<i>7.6</i>	<i>12.6</i>	<i>14.3</i>
GUEST ARRIVALS					
<i>June quarter 1995</i>	<i>4,186</i>	<i>3,050</i>	<i>1,587</i>	<i>3,910</i>	<i>12,733</i>
<i>1996—</i>					
April	2,024	1,983	945	2,533	7,485
May	1,138	823	388	892	3,241
June	760	716	317	867	2,660
<i>June quarter 1996</i>	<i>3,922</i>	<i>3,522</i>	<i>1,650</i>	<i>4,292</i>	<i>13,386</i>
AVERAGE LENGTH OF STAY (days)					
<i>June quarter 1995</i>	<i>1.7</i>	<i>1.8</i>	<i>1.4</i>	<i>1.4</i>	<i>1.6</i>
<i>1996—</i>					
April	1.8	1.8	1.4	1.4	1.6
May	2.0	1.6	1.2	1.5	1.7
June	2.1	1.4	1.6	1.6	1.7
<i>June quarter 1996</i>	<i>1.9</i>	<i>1.7</i>	<i>1.4</i>	<i>1.4</i>	<i>1.6</i>
TAKINGS FROM ACCOMMODATION (\$'000)					
<i>June quarter 1995</i>	<i>82</i>	<i>60</i>	<i>23</i>	<i>62</i>	<i>226</i>
<i>1996—</i>					
April	46	41	13	48	147
May	25	16	6	17	63
June	17	12	5	17	51
<i>June quarter 1996</i>	<i>87</i>	<i>68</i>	<i>23</i>	<i>82</i>	<i>261</i>

**TABLE 13. PASSENGER ARRIVALS AND DEPARTURES, TASMANIA,
INTERSTATE AND INTERNATIONAL (a)(d)**
(Source: Tourism, Sport & Recreation)

Period	Arrivals			Total	Departures (b)	Cruise Ships (c)	
	By air		By sea			Arrivals	Departures
	Interstate	International					
1988	571,344	8,625	101,572	681,541	683,635	5,497	6,161
1989	449,481	8,489	118,646	576,616	591,152	4,149	4,149
1990	555,631	8,629	120,004	684,264	679,833	3,255	3,255
1991	625,366	5,897	131,375	762,638	764,731	6,720	6,663
1992	652,092	4,428	114,969	771,489	761,109	4,608	4,608
1993	694,244	5,144	115,381	814,769	814,835	2,033	2,033
1994	745,508	4,166	128,644	878,318	880,936	6,592	6,592
1995	811,784	3,982	116,869	932,635	931,278	6,199	6,199
1994-							
January	73,470	473	12,536	86,479	103,610	1,596	1,596
February	63,506	413	12,324	76,243	69,690	2,470	2,470
March	66,848	414	13,054	80,316	85,030	1,064	1,064
April	62,519	502	11,732	74,753	78,095	-	-
May	50,076	242	8,151	58,469	70,924	-	-
June	52,737	167	7,629	60,533	56,244	-	-
July	52,995	186	6,983	60,164	63,737	-	-
August	50,447	250	7,199	57,896	61,996	-	-
September	69,099	340	13,430	82,869	66,659	-	-
October	61,361	422	11,466	73,249	71,846	980	980
November	63,701	338	10,707	74,746	73,918	482	482
December	78,749	419	13,433	92,601	79,187	-	-
1995-							
January	80,818	318	12,430	93,566	115,126	1,368	1,368
February	78,700	269	11,704	90,673	81,727	1,772	1,772
March	68,790	351	13,087	82,228	86,348	659	659
April	66,840	423	9,584	76,847	83,918	-	-
May	53,364	277	8,368	62,009	70,563	-	-
June	57,146	211	7,678	65,035	62,555	-	-
July	56,761	294	5,793	62,848	59,312	-	-
August	58,124	240	4,027	62,391	65,381	-	-
September	73,105	407	11,150	84,662	72,559	-	-
October	65,079	346	10,889	76,314	75,628	-	-
November	68,990	394	10,187	79,571	77,855	810	810
December	84,067	452	11,972	96,491	80,306	1,590	1,590
1996-							
January	83,246	384	12,756	96,386	114,160	2,806	2,806
February	74,239	377	10,926	85,542	79,106	1,630	1,630
March	71,858	503	10,998	83,359	89,056	-	-
April	72,146	355	9,652	82,153	84,390	-	-
May	60,990	182	4,861	66,033	78,425	-	-
June	63,351	120	5,417	68,888	66,010	-	-

(a) The following persons are not included in these statistics : passengers under three years of age accompanied by an adult ; passengers travelling on chartered flights with minor carriers ; passengers travelling on private or VIP flights.

(b) The approximate proportion of departing passengers who were visitors was shown to be 58 per cent in the 1981 Tasmanian Visitor Survey, 55 per cent in the 1984 TVS, 53 per cent in the 1986 TVS, 60 per cent in the 1988 TVS, 65 per cent in the 1990 TVS, 58 per cent in the 1991 TVS, 55 per cent in the 1992 TVS, 58 per cent in the 1993 TVS, 60 per cent in the 1994 TVS and 58 per cent in the 1995 TVS.

(c) Cruise ship statistics were not collected before November 1986 and are not included in Total Arrivals and Total Departures.

(d) The domestic airline pilots dispute commenced on 18 August 1989 with the pilots working restricted hours (9 a.m to 5 p.m). The pilots were suspended on 23 August 1989.

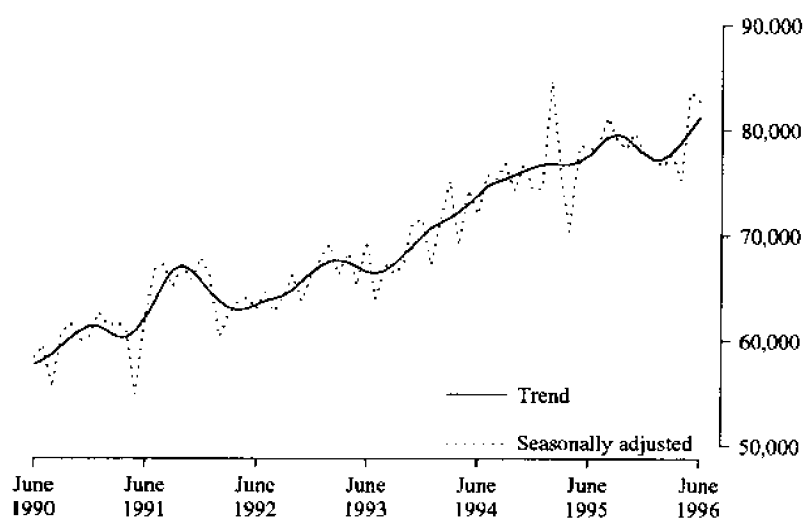
**TABLE 14. TOTAL PASSENGER ARRIVALS BY AIR AND SEA INTO TASMANIA :
SEASONALLY ADJUSTED AND TREND SERIES (a)(b)**

Period		Original	Seasonally adjusted (a)	Trend
June	1990	48,623	58,316	57,648
	1991	52,243	62,314	62,119
	1992	52,354	62,890	63,368
	1993	57,479	69,495	66,469
	1994	60,533	71,998	73,848
	1995	65,035	78,183	77,636
	1996	68,888	82,722	81,326
1994-				
	January	86,479	67,166	70,676
	February	76,243	71,406	71,184
	March	80,316	75,178	71,659
	April	74,753	69,037	72,246
	May	58,469	74,329	72,996
	June	60,533	71,998	73,848
	July	60,164	75,721	74,623
	August	57,896	75,372	75,047
	September	82,869	76,858	75,355
	October	73,249	74,218	75,752
	November	74,746	76,760	76,129
	December	92,601	74,350	76,496
1995-				
	January	93,566	74,470	76,709
	February	90,673	84,724	76,756
	March	82,228	76,099	76,695
	April	76,847	70,362	76,747
	May	62,009	78,554	77,022
	June	65,035	78,183	77,636
	July	62,848	78,173	78,455
	August	62,391	81,276	79,256
	September	84,662	79,187	79,598
	October	76,314	78,183	79,265
	November	79,571	79,734	78,526
	December	96,491	77,749	77,754
1996-				
	January	96,386	77,172	77,233
	February	85,542	76,566	77,292
	March	83,359	77,720	77,895
	April	82,153	75,312	78,876
	May	66,033	83,587	80,039
	June	68,888	82,722	81,326

(a) There is an annual recalculation of seasonal adjustment factors to include the most recent year's arrivals. This occurs at the end of each financial year and may cause revisions to previously-published seasonally-adjusted and trend figures, as can be seen in Table 14. A full printout of seasonally-adjusted and trend series figures dating back to 1971 can be obtained through the publication officer for this publication (Eddie Oakford).

(b) The domestic airline dispute commenced on 18 August 1989 with the pilots working restricted hours (9 a.m. to 5 p.m.). The pilots were suspended on 23 August 1989.

TOTAL ARRIVALS IN TASMANIA



EXPLANATORY NOTES

INTRODUCTION

1 This publication contains data for Tasmania from a quarterly survey of tourist accommodation establishments.

SCOPE

2 Tourist accommodation establishments currently included in the survey comprise two groups:

- Establishments which provide predominantly short-term accommodation (i.e. for periods of less than 2 months) to the general public. These include:
 - *Hotels, motels and guest houses, with facilities* being hotels licensed to operate a public bar and motels, private hotels and guest houses all of which provide a bath (or shower) and toilet in most guest rooms and have breakfast available for guests. NOTE: From December quarter 1993, hotel, motel and guest house establishments with fewer than five rooms have been formally excluded from the scope of this statistical collection.
 - *Holiday flats, units and houses* (excluding establishments predominantly operated on a time share basis) which are operated by owners, managers or real estate agents who have sole letting rights to at least five flats, units or houses for short-term letting. They are mainly self-contained in terms of cooking, bath (or shower) and toilet facilities and do not have breakfast available for guests. Data for holiday flats, units and houses include short-term owner occupation as well as paying guest occupation.
 - *Visitor hostels* which provide accommodation to visitors on a bed basis (rather than by the room). This category does not include establishments providing charity type accommodation (e.g. Salvation Army hostels) nor hotels, motels and guest houses without in-room facilities which provide accommodation on a per room basis.
 - *Caravan parks* which provide either predominantly short-term (i.e. for periods of less than 2 months) or predominantly long-term (i.e. for periods of 2 months or more) accommodation to the general public and which provide powered sites for caravans and toilet, shower and laundry facilities for guests.

3 Data collected and published for each type of establishment (other than holiday flats, units and houses) include both long-term and short-term guests at these establishments.

4 Establishments which provide more than one type of accommodation (e.g. a motel with attached caravan park) are treated as two or more separate establishments. However, self-contained units, flats, cabins, etc. attached to hotels, motels or to caravan parks are included in the capacity for those establishments and not treated as separate holiday flat, unit or house establishments.

AUSTRALIAN STANDARD

GEOGRAPHICAL CLASSIFICATION

5 Statistics presented in this publication have been classified according to the Australian Standard Geographic Classification (ASGC), Edition 2.5. This classification incorporates a number of hierarchic structures of geographic areas. The appropriate spatial units of the main structure of the ASGC used in this publication are defined as follows.

EXPLANATORY NOTES

AUSTRALIAN STANDARD
GEOGRAPHICAL CLASSIFICATION
continued

STATISTICAL LOCAL AREAS (SLAs) are legal Local Government Areas or parts thereof, which serve as the smallest type of spatial unit considered appropriate for the presentation of statistics and which add, without gaps or overlaps, to; STATISTICAL SUBDIVISIONS (SSDs) which in turn represent another, higher hierarchic level and add, without gaps or overlaps, to; STATISTICAL DIVISIONS (SDs) which in turn add, without gaps or overlaps, to; *Total Tasmania*.
For more detailed information, refer to the ASGC (1216.0).

UNPUBLISHED STATISTICS

6 The ABS may make available on request certain unpublished tourist accommodation statistics. A charge may be made for this information.

RELATED PUBLICATIONS

7 Publications for Australia, and each State and Territory, are released by the respective offices of the ABS. Tourist accommodation statistics for past quarters are available on request. Other ABS publications which may be of interest include:

- *Directory of Tourism Statistics* (1130.0) (irregular: first and latest issue; 1991)
- *Overseas Arrivals and Departures, Australia* (3401.0) (monthly)
- *Tourism Indicators, Australia* (8634.0) (quarterly)
- *Tourism Accommodation, Australia* (8635.0) (quarterly)

8 Current publications produced by the ABS are listed in the *Catalogue of Publications and Products* (1101.0). The ABS also issues the *Release Advice* (1105.0) on Tuesdays and Fridays which lists publications to be released in the next few days. Both the Catalogue and *Release Advice* are available from any ABS office.

SYMBOLS AND OTHER USAGES

n.a. not available
n.p. not available for publication but included in totals where applicable
r revised
.. not applicable
— nil or rounded to zero
— break in continuity of the series (where drawn across a column between two consecutive figures)

9 Where figures have been rounded, discrepancies may occur between totals and the sums of the component items.

GLOSSARY

.....

Average length of stay	<p>Average length of stay is expressed in numbers of days and calculated:</p> <ul style="list-style-type: none"> ▪ for hotels, motels and guest houses, by dividing <i>Guest nights</i> by <i>Guest arrivals</i> and ▪ for holiday flats, units and houses, by dividing <i>Unit nights occupied</i> by <i>Unit lettings</i>.
Bed spaces	Three-quarter beds are counted as one bed space; double beds as two bed spaces. Cots are excluded.
Capacity	Capacity in terms of <i>Guest rooms</i> , <i>Bed spaces</i> , <i>Holiday units</i> or <i>Caravan park sites</i> , etc. is the maximum number available to accommodate paying guests during the survey period. Capacity closed temporarily for seasonal reasons is included.
Caravan park capacity	The total number of <i>On-site vans</i> , <i>Other powered sites</i> , <i>Unpowered sites</i> and <i>Cabins</i> , etc.
Employment	The number of persons working at accommodation establishments at the end of the survey period (including working proprietors and those working on other than accommodation activities).
Establishments	For hotels, motels and guest houses, caravan parks and visitor hostels, the number of establishments within the scope of the survey which operated for any part of the survey period, or which closed temporarily for the quarter for seasonal reasons.
Guest arrivals	The total number of paying guests counted only on the first night they stayed at the accommodation establishment.
Letting entitles	For holiday flats, units and houses, the number of owners, managers or real estate agents within the scope of the survey who operated for any part of the survey period.
Occupancy	<p>Occupancy in terms of <i>Room nights</i>, <i>Unit nights</i> or <i>Site nights occupied</i> refers to the total number of nights each guest room, holiday unit or caravan park site, etc. was occupied during the survey period. NOTE: From September quarter 1992, caravan park sites, etc. permanently reserved for 2 months or more at the end of the survey period but only casually occupied by their tenants have been recorded continuously as <i>Site nights occupied</i> irrespective of whether the tenants of individual sites were in residence on any particular night.</p> <p>Occupancy in terms of <i>Guest nights</i> refers to the total number of nights each paying guest stayed during the survey period.</p>
Occupancy rates	<p><i>Occupancy rates</i> represent occupancy expressed as a percentage of total capacity available during the survey period, e.g.</p>

$$\text{Room occupancy rate (\%)} \text{ for the period} = \frac{\text{Room nights occupied}}{(\text{Guest rooms}) \times (\text{No. of days in the period})} \times 100$$

providing that, for establishments closing (other than for seasonal reasons) or opening during the survey period, the denominator of the above expression includes only operating periods.

GLOSSARY

.....

Other sites permanently reserved	The total number of powered and unpowered sites, on-site vans and cabins, etc. continuously let for 2 months or more by the end of the survey period to tenants who occupy the sites only on a casual or sporadic basis. Separate data for this item are available only from September quarter 1992.
Room nights available	The number of guest rooms available multiplied by the number of days for which they were available during the survey period. Including operating periods only for establishments closing (other than for seasonal reasons) or opening during the survey period.
Sites occupied by long-term guests	The total number of sites, etc. occupied at the end of the survey period by guests who have stayed continuously for 2 months or more.
Star grading	The grading of hotels and motels with facilities based on the classification system used by members of the Australian Automobile Association (AAA). The gradings are allocated according to a points system based on the amenities and facilities available to guests. Details of the grading scheme are contained in the RACV-RAASA members' publication <i>Accommodation Australia</i> , or the individual tour guides produced by members of the AAA. For the purpose of classifying establishments to a star grading in this publication, 'half' star gradings are ignored (e.g. a two and a half star grading has been shown as two star).
Takings from accommodation	Revenue received from the provision of accommodation. Takings from meals are excluded. Takings from accommodation for each month generally represent the takings received during that month. Where payments are received in advance of, or after, the provision of accommodation to guests, the monthly figure for takings from accommodation may not necessarily bear a direct relationship to the number of guests accommodated during the month. Rental and storage fees paid to caravan parks for the keeping of private vans in parks are included in the takings of the month they are received.
Unit lettings	The total number of times a holiday flat, unit or house was occupied by a new tenant, counted only on the first night it was occupied by the new tenant.



FOR MORE INFORMATION . . .

The ABS publishes a wide range of information on Australia's economic and social conditions. A catalogue of publications and products is available from any of our offices (see below).

INFORMATION CONSULTANCY SERVICES

Information tailored to special needs of clients can be obtained from the Information Consultancy Service available at ABS Offices (see below).

ABS PRODUCTS

A large number of ABS products is available from the ABS Bookshops (see below). The ABS also provides a subscription service – you can telephone the ABS Subscription Service Australia wide toll free on 1800 0206 08.

ELECTRONIC SERVICES

A large range of data is available via on-line services, diskette, magnetic tape, tape cartridge and CD ROM. For more details about our electronic data services, contact any ABS office (see below) or email us at:

X.400 (C:Australia,PUB:Telememo,O:ABS,EN:STAT,SN:INFO)
Internet Stat.info@abs.telememo.au
Keylink STAT.INFO/ABS

You can visit us on the Internet at: <http://www.statistics.gov.au>

GENERAL SALES AND INQUIRIES

- | | |
|-----------------------------|-------------------------|
| ■ Sydney 02 9268 4611 | ■ Adelaide 08 8237 7100 |
| ■ Melbourne 03 9615 7755 | ■ Hobart 002 20 5800 |
| ■ Brisbane 07 3222 6351 | ■ Darwin 08 8943 2111 |
| ■ Perth 09 360 5140 | ■ Canberra 06 252 6627 |
| ■ Information Services, ABS | |



2863560006961

ISSN 0312-6900

RRP \$14.50